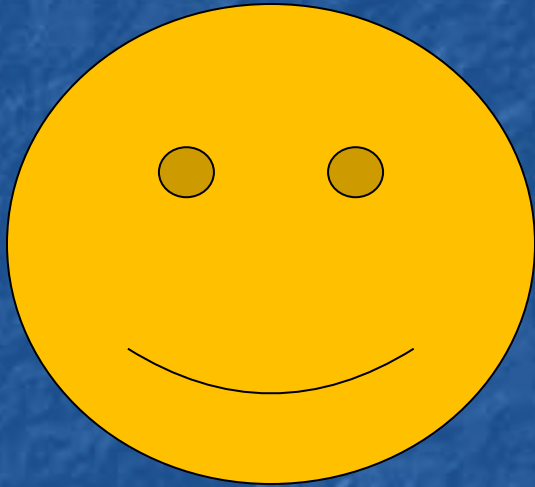


Partnerships for Sustaining Native Plant Materials Programs

Prepared for the
National Native Seed Conference:
Plant Materials Development, Production and Use in
Habitat Restoration

May 20, 2010
Snowbird, Utah

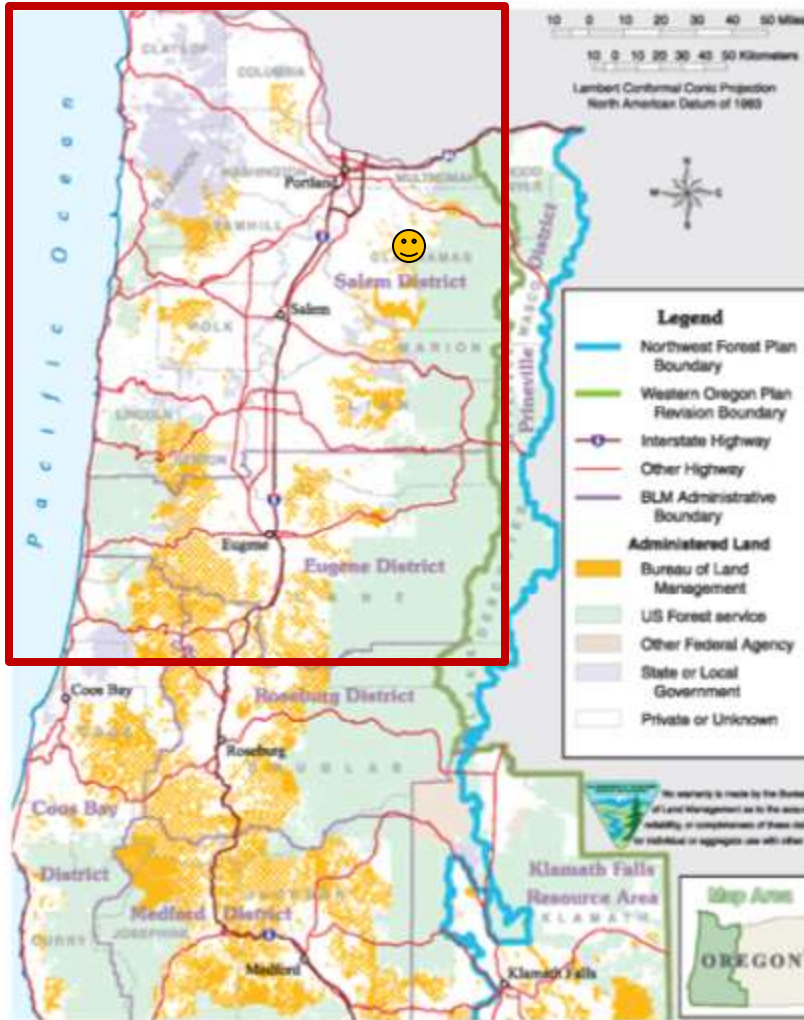
Horning Native Plant Center



=



Western Oregon Location and Land Ownership



Interagency Native Plant Materials Working Group Partners

- Salem and Eugene Districts, BLM
- Willamette National Forests
- Siuslaw National Forest
- Corvallis Plant Materials Center



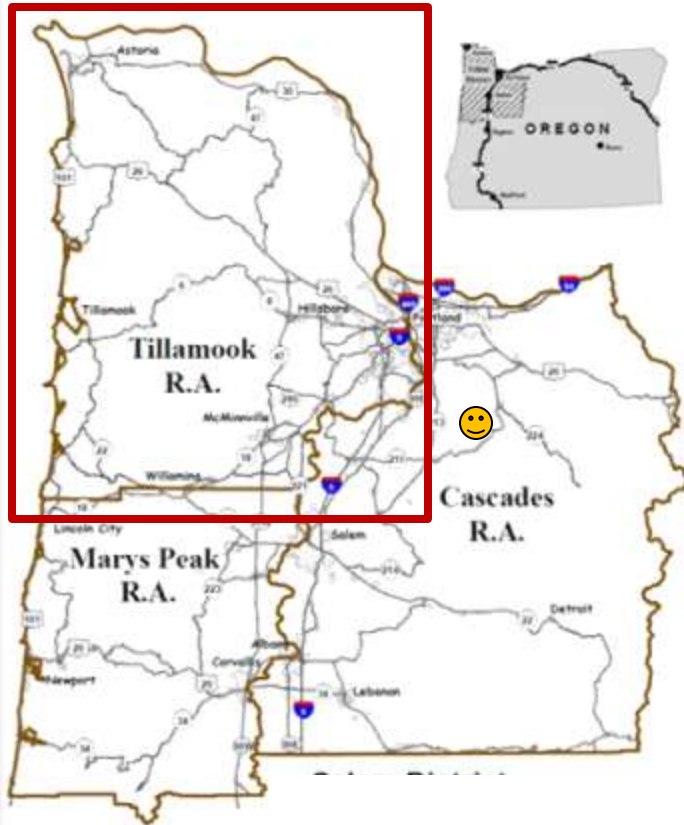
Interagency Native Plant Materials Working Group – Since 1997



Salem District Bureau of Land Management

Tillamook Partners

- Horning Native Plant Center *
- Seven watershed councils
- Oregon Youth Authority *
- Tillamook County Soil and Water Conservation District
- Tillamook Estuaries Partnership
- Yamhill Basin Council*



Tillamook Riparian Restoration Effort – Since 2002



Promote healthy forest/riparian ecosystem conditions by developing and planting large planting stock for restoration activities

Lifetime Accomplishments since 2002:

- Restored : 208 miles of stream & 89 acres of wetlands.
- Over 193 education sessions or demonstration tours hosted and attended by about 5,700 people.

2009 Accomplishments:

- BLM propagated about 33,000 plants (plugs, potted, and bareroot stock); Camp Tillamook about 16,600 trees and shrubs (primarily potted); the rest of the partners about 3,200 plants
- 65,000 trees and shrubs planted along 23 miles of streams and over 16 acres of wetlands.

Salem District Bureau of Land Management



Marys Peak Resource Area Partners

- **Heritage Seedlings, Inc.**
- **Institute for Applied Ecology**
- **Horning Seed Orchard**

Marys Peak Resource Area Partners at Work



Walter Horning Tree Seed Orchard

- BLM facility established in 1964 – a multiple use facility serving several cooperators in western Oregon
- Primary role was to provide genetically improved Douglas-fir and sugar pine seedlings
- In 1997 the focus expanded to include non-coniferous species for native plant materials development and restoration projects

Seed Orchard & Native Plant Center

Factors leading to restructuring Horning

- History of native plant materials development projects at Horning by a variety of entities.
- Interest in finding a way to continue to use the facility for native plant materials development by several organizations
- Facility not being used to capacity and key parts were identified for potential mothball status.

Horning Native Plant Center



Nursery Work Building



Three Greenhouses



New Storage Building Provides Work Space and Frees Greenhouse Growing Space 2002



Building Transition Space 2003 - 2004



Using Transition Space
2009

Land cleared, fenced and tilled in preparation for Native Plant Production 2001



Luzula campestris

Picture April 2005

West Eugene Wetlands lot – plugs planted 2004



California Brome Genetic Study

Study planted May 2002. Morphological and genetic data collected in 2002
- 2004



Harvesting of Columbia Brome and Oregon Sunshine with a Small Plot Combine



Shaded Water Beds

Newly developed water beds at Horning (2003 - 2004)
Two 20' x 50' houses hold 24 beds of 15 growing trays each



Seed Extractory



More to the facility

- Office space
- Cold & dry storage areas
- Shop
- Heavy equipment
- Seed lab, drying loft, more to seed extractory

Genesis of the Horning Native Plant Center

- Spring & Summer 2008 field tours & letters of interest from potential partners
- Steering Committee formed and fiscal agent found

Our Vision

To pursue the coordination of native plant development projects at Horning Seed Orchard for a wide variety of governmental and non-governmental clients.

The Partners

U.S. Department of Interior – Bureau of Land Management

U.S. Department of Agriculture – Forest Service

Cascade Pacific Resource Conservation and Development

U.S. Department of Interior - National Park Service

U.S. Department of Interior – U.S. Fish and Wildlife Service

Institute for Applied Ecology

**Natural Resource Conservation Service; Plant Materials
Center**

The Nature Conservancy

Formalizing the Partnership

- Memorandum of Understanding signed August, 2009.
- Assistance Agreement between Cascade Pacific Resource Conservation and Development Inc. & BLM in place September 2009
- Director selection made in winter 2010

Partnership Goals

- Will not compete with private industry
- Establish and maintain clients
- Fill unmet needs in the native plant materials development community.

■ Jenni Gorski

- Director, Horning Native Plant Center
- gorskijenni@gmail.com



- Janice Howe
 - Grower, Horning Native Plant Center



Thanks for your attention

